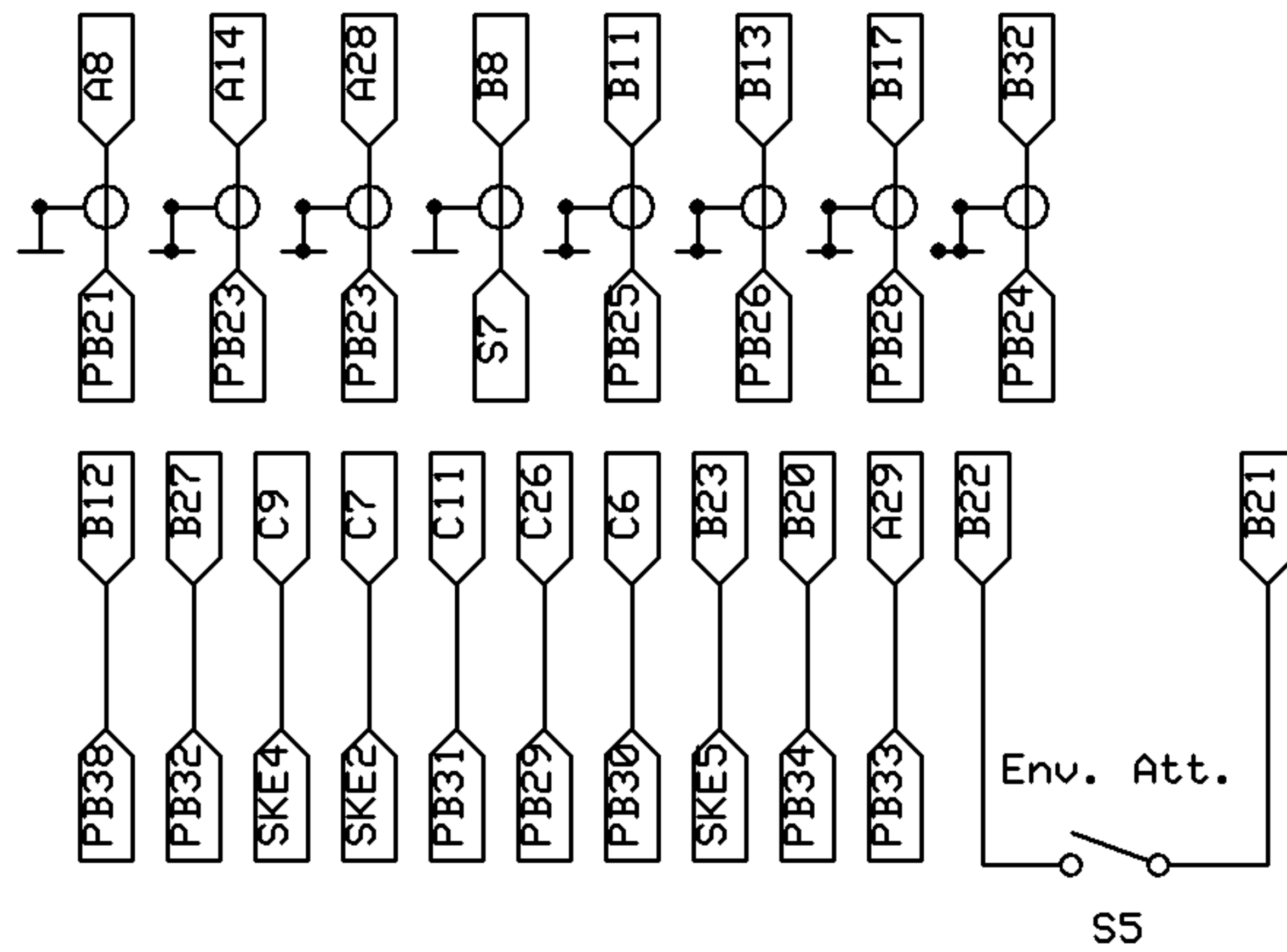
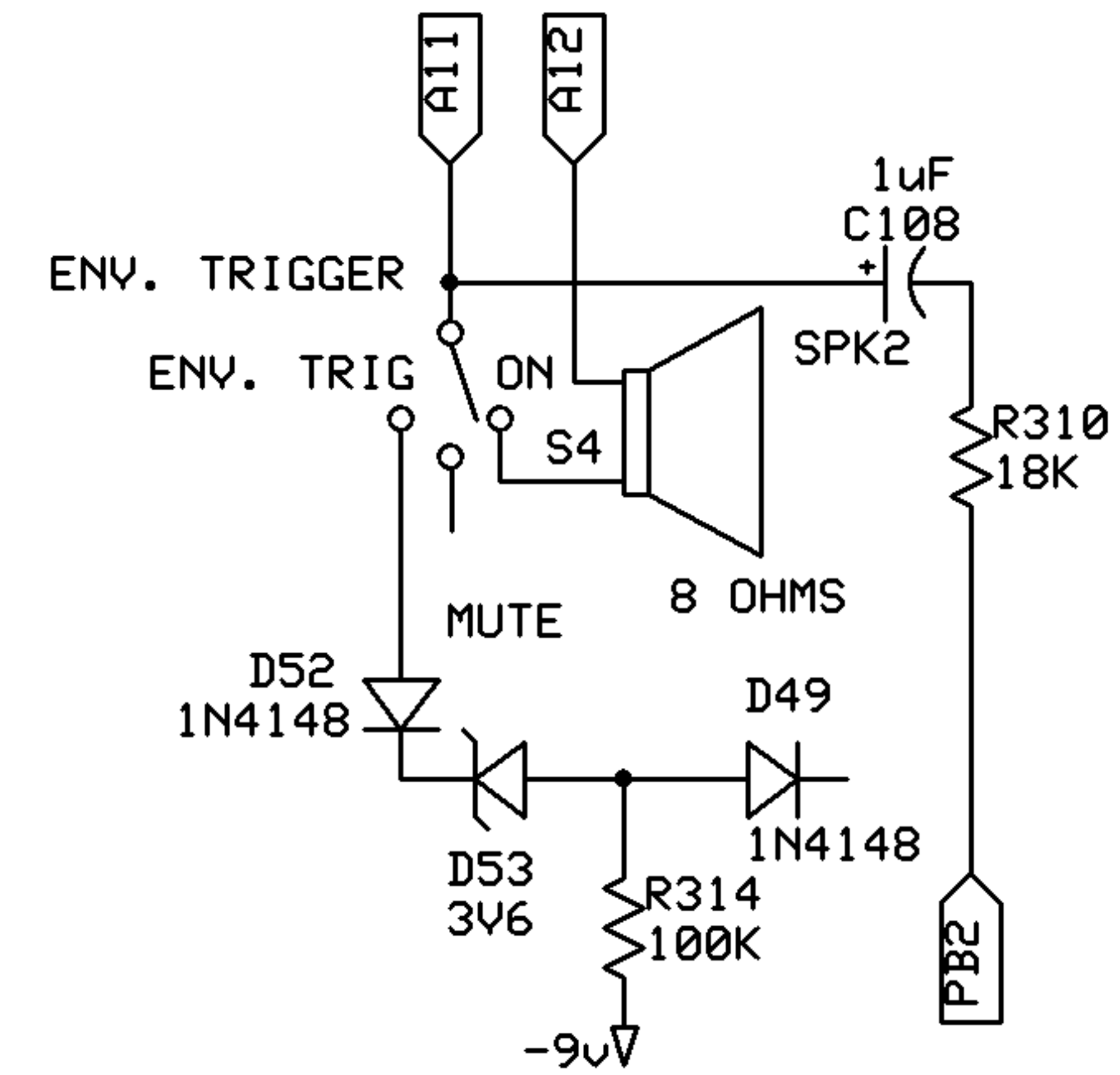
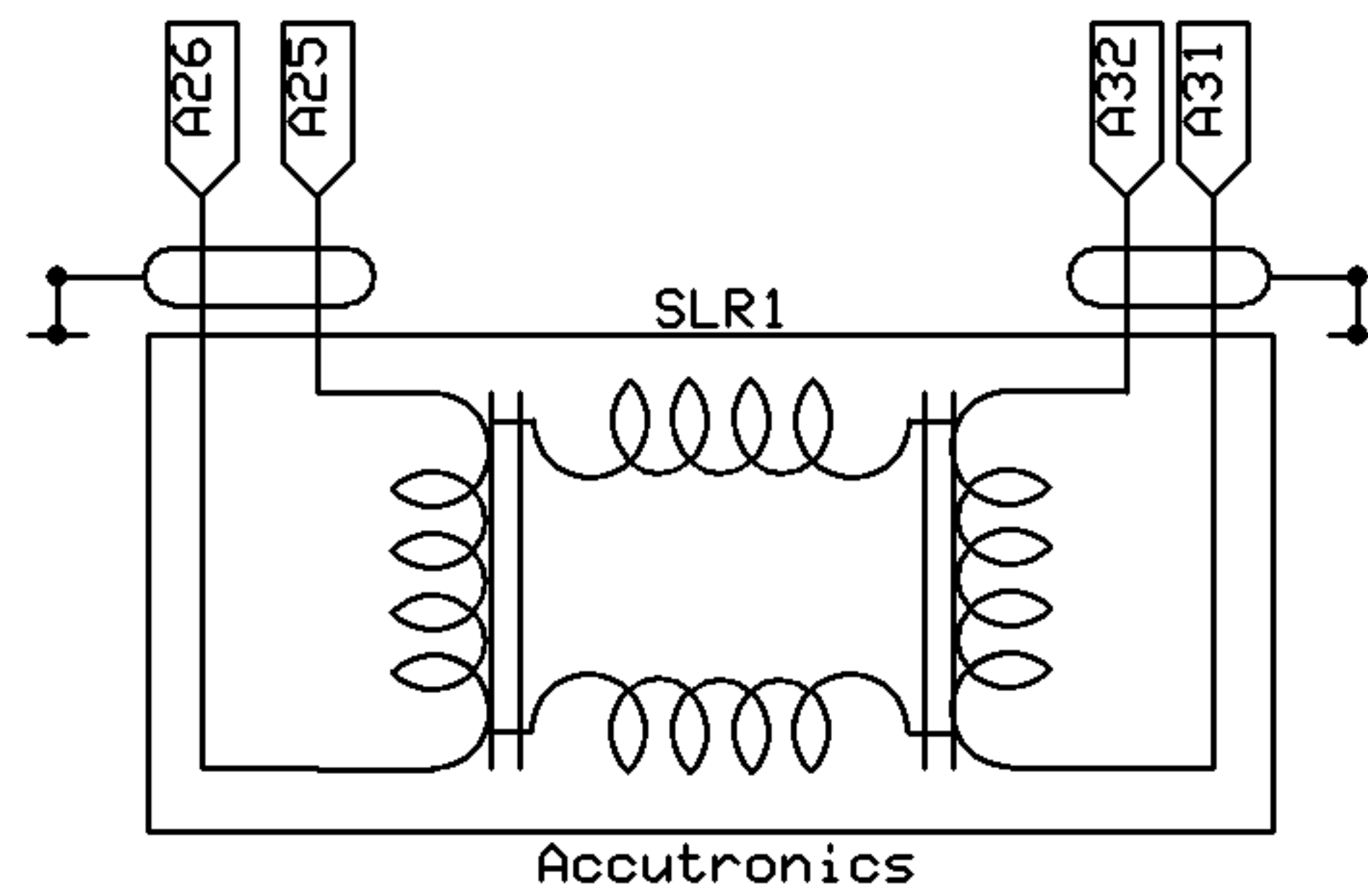
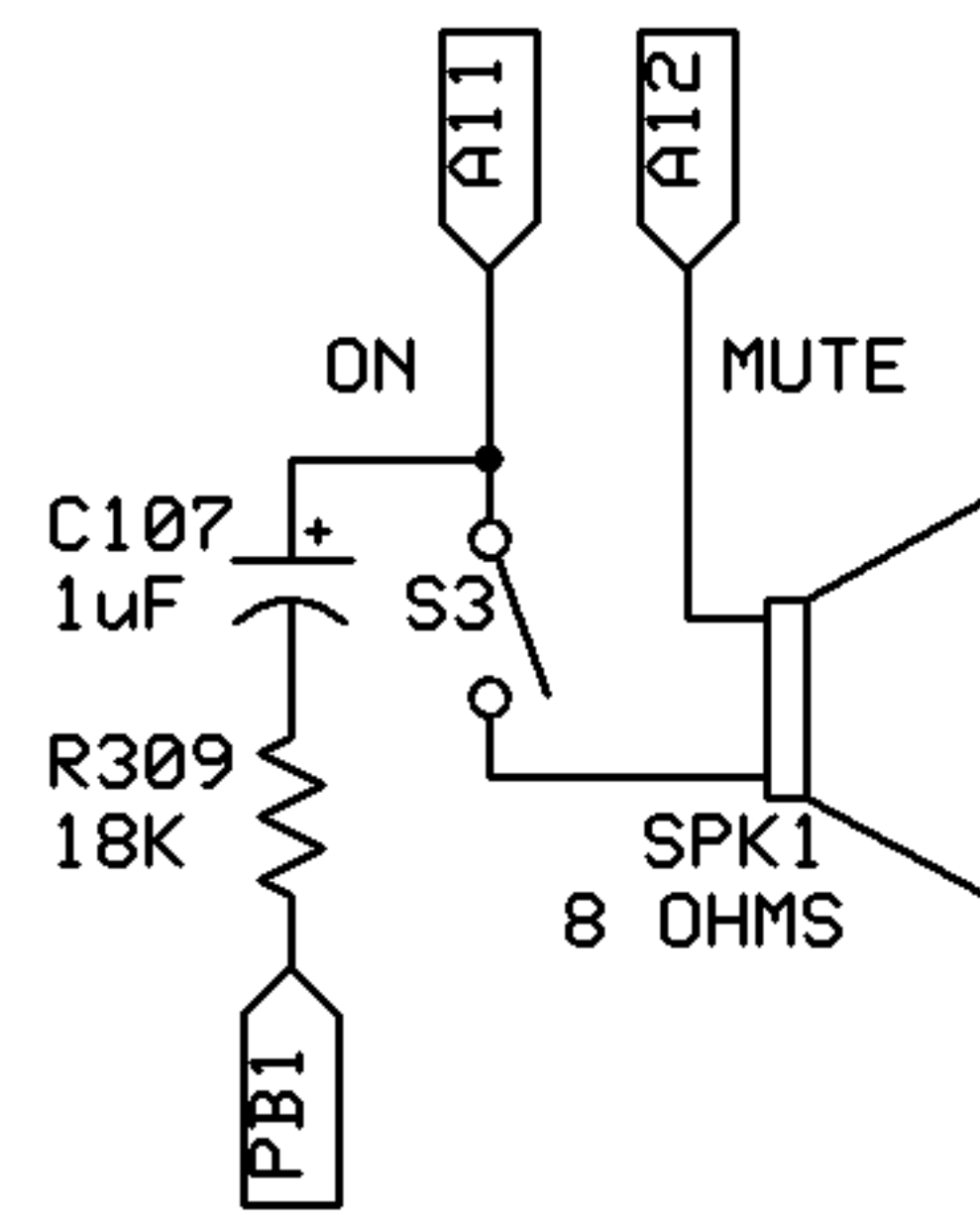
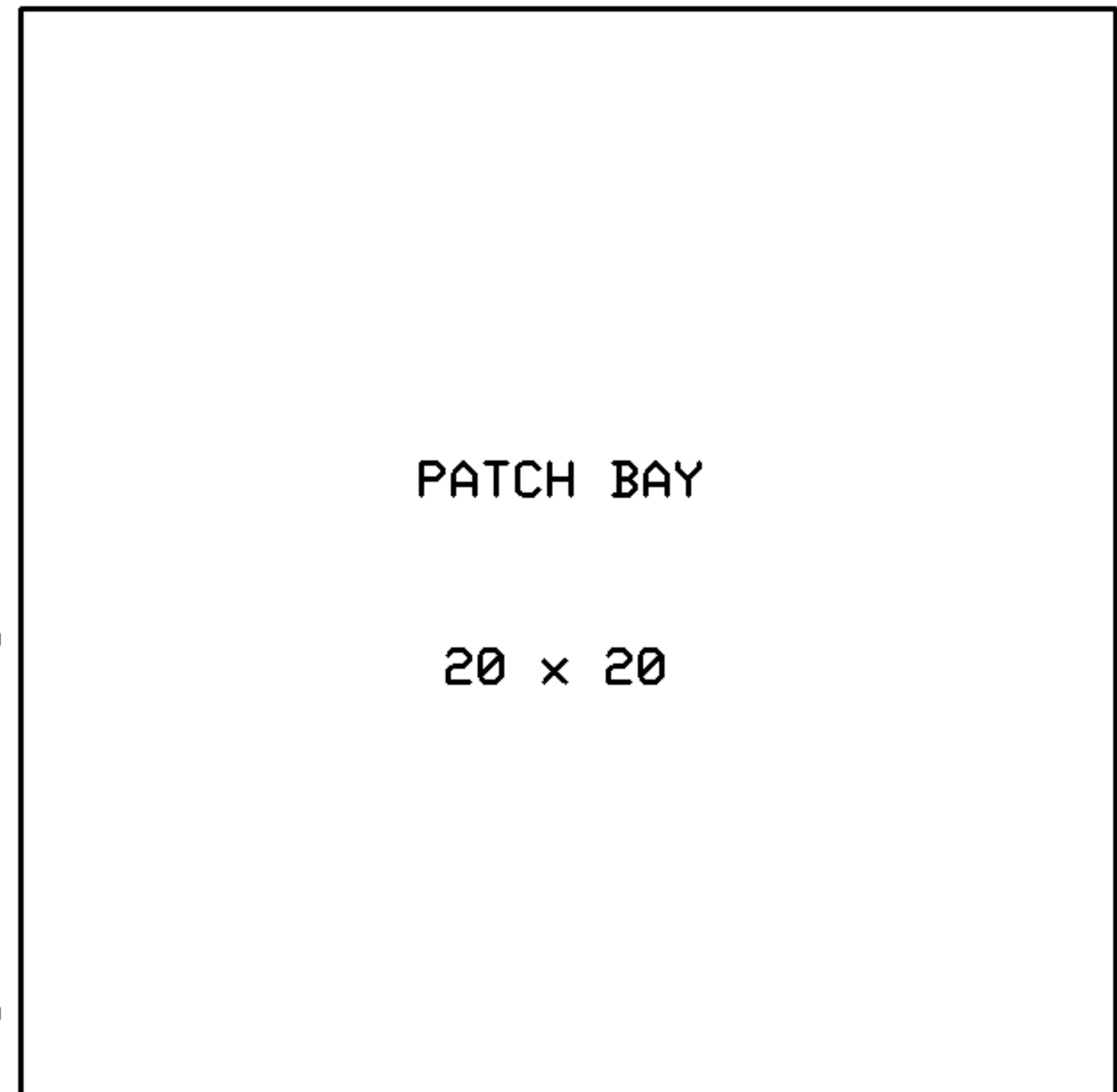


CH. 1 SPEAKER



- Output Ch. 1 (PB21)
- Scope/Meter (PB22)
- Output Ch. 2 (PB23)
- Envelope Shaper In (PB24)
- Ring mod. A (PB25)
- Ring mod. B (PB26)
- Reverb. (PB27)
- Filter (PB28)
- Osc. 1 Freq. (PB29)
- Osc. 2 Freq. (PB30)
- Osc. 3 Freq. (PB31)
- Osc. 1 Shape (PB32)
- Osc. 2 shape (PB33)
- S/H In (PB34)
- Envelope Decay (PB35)
- Reverb. mix (PB36)
- Filter freq. (PB37)
- Filter resp. (PB38)
- Output Ch. 1 level (PB39)
- Output Ch. 2 level (PB40)

- Output Channel Ch. 1 (PB1)
- OSC. 1 Sine Out (PB3)
- OSC. 1 Ramp Out (PB4)
- OSC. 2 Square Out (PB5)
- OSC. 2 Triangle Out (PB6)
- Osc 3. Square (PB7)
- Osc. 3 Triangle (PB8)
- Noise (PB9)
- Sample and Hold (PB10)
- Input 1 (PB11)
- Input 2 (PB12)
- Filter (PB13)
- Trapezoid (PB14)
- S/H Out (PB15)
- Env. signal (PB16)
- Ring mod. (PB17)
- Reverb. (PB18)
- Joystick ↔ (PB19)
- Joystick ↓ (PB20)



PCB CONNECTOR PINOUTS
(BOTTOM VIEW)

A1	B1	C1
A2	B2	C2
A3	B3	C3
A4	B4	C4
A5	B5	C5
A6	B6	C6
A7	B7	C7
A8	B8	C8
A9	B9	C9
A10	B10	C10
A11	B11	C11
A12	B12	C12
A13	B13	C13
A14	B14	C14
A15	B15	C15
A16	B16	C16
A17	B17	C17
A18	B18	C18
A19	B19	C19
A20	B20	C20
A21	B21	C21
A22	B22	C22
A23	B23	C23
A24	B24	C24
A25	B25	C25
A26	B26	C26
A27	B27	C27
A28	B28	C28
A29	B29	C29
A30	B30	C30
A31	B31	C31
A32	B32	C32

NOTES:

3. A24, B25, C25 = 0V
2. A4, B18, C19, C20, C21 = +12V
1. A3, B16, C16, C17, C18 = -9V

Sage Music Electronics

Internal wiring connections

Derek G Revell

Rev 1.1

07/05/2010

Page 3 OF 4